



INTERIOR FITOUT



Table of Content

- ◆ About our Company

- ◆ Overview

- ◆ Our Services

- ◆ Individual Services

- ◆ What We Do

- ◆ Recent Projects In Bahrain
 - ◆ Recent Projects In Saudi Arabia
 - ◆ Recent Projects In Oman

- ◆ Who They Are

- ◆ Our Clients



1. About Our Company



// OVERVIEW

Geneire brings its engineering and modular construction pedigree into the realm of high-end interior fit-out. With experience spanning commercial offices, hospitality, retail, education, and camp accommodations, we deliver fully integrated, turnkey interior solutions that elevate space, experience, and value.

What began as an in-house support function for our building and EPC projects has evolved into a dynamic, standalone division—bringing aesthetic innovation, functional design, and flawless execution to every environment we touch.

What We Deliver

- ◆ Premium office fit-outs with ergonomic, brand-reflective designs
- ◆ Hospitality interiors for hotels, lounges, and guest areas
- ◆ Modular interiors for educational and training facilities
- ◆ Retail and commercial rollouts with consistent identity and finish
- ◆ Site camp accommodations built for comfort, durability, and speed





// OVERVIEW

Our designs blend functionality and flair, incorporating advanced HVAC, premium finishes, acoustics, lighting, and bespoke elements that capture the identity and ethos of each client.

Why Choose Geneire?

- ◆ Design & Engineering Excellence – Smart layouts, modern materials, and brand-centric detailing
- ◆ Experienced Interior Fit-Out Team – From concept to commissioning, our team delivers with confidence
- ◆ Uncompromised Quality – Precision execution and strict quality control
- ◆ Cost-Efficient Value Engineering – Maximizing impact while optimizing investment
- ◆ Seamless Project Delivery – Integrated planning, procurement, and site coordination
- ◆ Sector Versatility – Proven track record across multiple industries and project sizes

Partner with Geneire

When you partner with Geneire, you gain more than a contractor—you gain a dedicated collaborator with a deep understanding of build environments, aesthetics, and performance.

Experience the Geneire difference where quality, efficiency, and design excellence come together to transform your spaces.



2. Our SERVICES



// OUR SERVICES

Geneire offers a full design-build solution for commercial offices, hotels, shopping outlets, retail spaces, training centres, sporting facilities, schools, colleges, and universities along with individual services listed below:

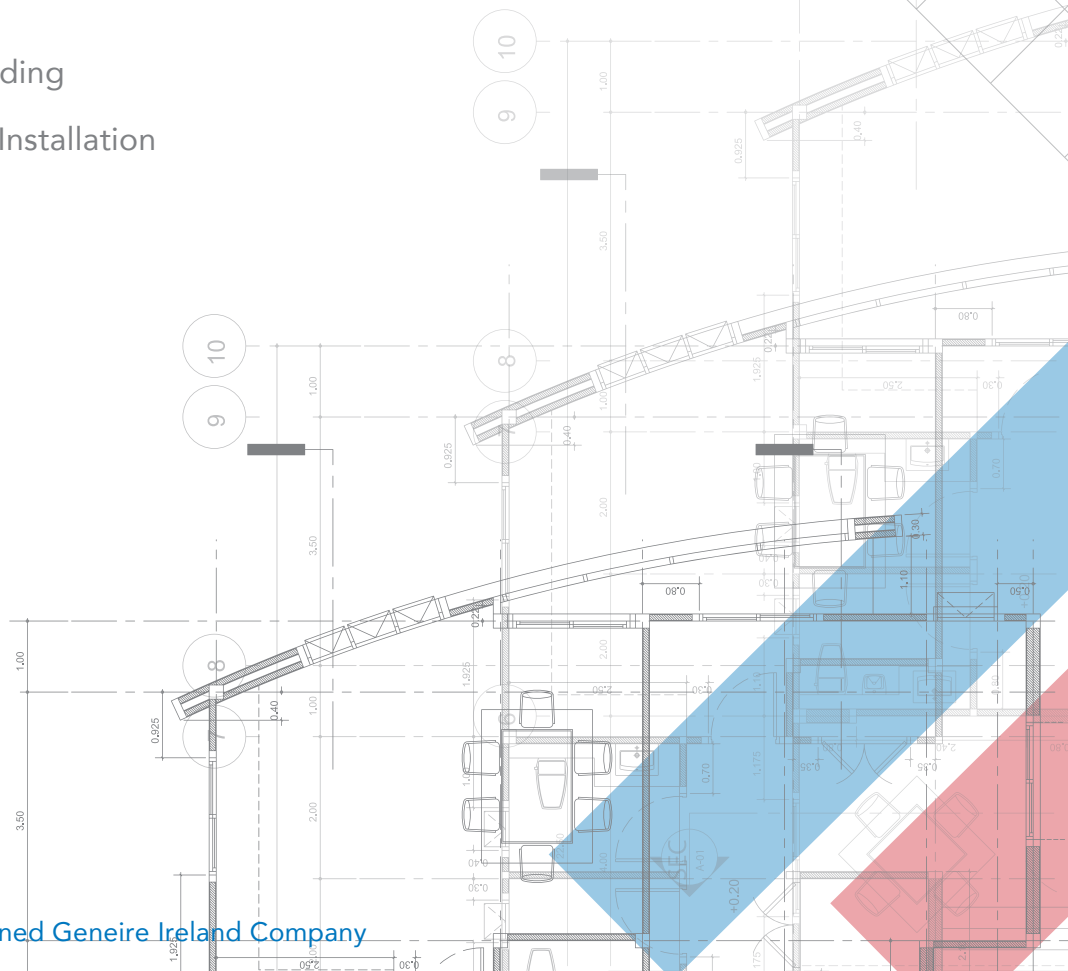
- ◆ Commercial Office Space Design Build Turnkey Solutions
- ◆ Hotel Design Build Solutions and Interior Fit-Out
- ◆ Restaurant and Entertainment Venues Design Build Solution
- ◆ Business-as-Usual Refurbishment of Existing Offices, Outlets, Hotels, and Commercial Spaces
- ◆ Educational Facilities
- ◆ Training Centers
- ◆ Sporting Facilities and Stadiums
- ◆ Exterior Cladding
- ◆ Landscaping
- ◆ Shopping Outlets
- ◆ Residential Villas and Apartments



// OUR SERVICES

List of Individual Services

- ◆ Internal Partitions and Ceilings
- ◆ All Types of Flooring
- ◆ Manufacture and Installation of Doors and Frames
- ◆ Bespoke Joinery
- ◆ Architectural Metal Work
- ◆ Interior and Exterior Wall Cladding
- ◆ Marble and Stone Supply and Installation
- ◆ Lighting Supply and Install
- ◆ Turnkey MEP Solutions
- ◆ Data and IT Solutions
- ◆ Office Furniture
- ◆ Hotel FF&E Supply
- ◆ Residential Furniture





3.1

What We Do

Bahrain



// RECENT PROJECTS

AL HAJRI CORPORATION

Al Hajri Corporation Executive Office – Located in the busy Seef District in the Platinum Tower, the design task was to create an extremely high end executive design, which would represent the global presence of this International Construction Corporation Giant.



The office was designed to accommodate the Chairman of the

Corporation and featured a spacious personal office, which could accommodate visiting executives on an informal basis, in the comfort of bespoke furniture, especially designed for this purpose along with a Pewter Bone Shaped personal desk overlooking the Informal seating area and panoramic views of the Bahrain Bay.

This office had an inter-connecting door to the Board Room which seated 12 members around a

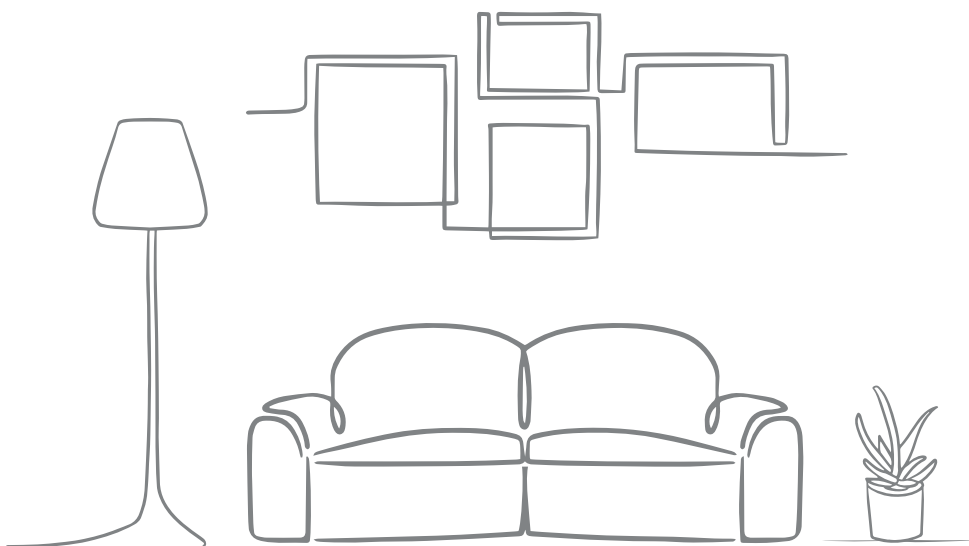


// RECENT PROJECTS

AL HAJRI CORPORATION

glass board room table with pewter Base and Herman Miller Chairs. The presentation TV was hidden behind a glass screen with could only be seen when in operation and supported with the very latest conferencing technology.

This small 250 m2 Design, Fit out and Bespoke Manufactured Furniture Niche Project, was fitted out in three months at a total cost of 1,100,000 USD. To the total satisfaction and expectation of the client.





BNP PARIBAS
The bank for a changing world



// RECENT PROJECTS

BNP PARIBAS

BNP Bank – Located in the Bahrain Financial Harbour, due to a restructuring program, the client required a consolidated design to maximise the space planning of the office space in downsizing from four floors to three floors. The restructuring of the offices also required the relocation of the Bank Branch, which was located on the surplus floor.



The relocation of the branch, not only required moving the teller stations etc. But the vault also. This complexed operation was not only difficult due to the massive security related concerns, but it required the full movement of the walk in vault. This through up structural issues as the weight was far too much to sit onto the existing building slab. Our engineering team in conjunction with the Consultant produced a structural support system that allow the successful relocation and a full

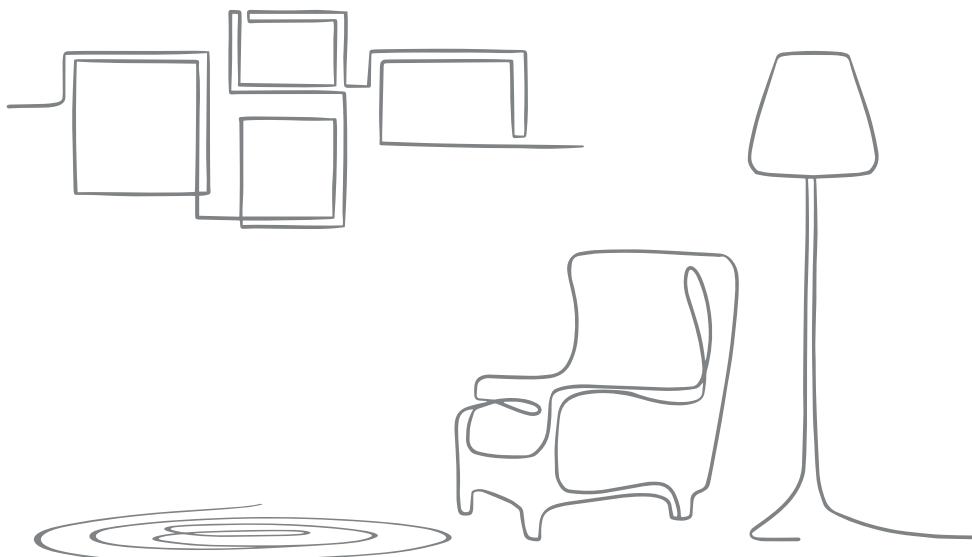


// RECENT PROJECTS

BNP PARIBAS

operational branch.

The compressing of the offices from 6,000 m² to 4,500 m² covering Design and Fitout and new workstations, was undertaken on a business as usual basis. The works progress on floor by floor basis, requiring staff to be relocate on a temporary basis to other areas of the office, to enable there departments space to be fitted out. This took place through 15 staged phases at a value of 968,000 Bahraini Dinars, spread over 4 month resulting in an office of maximised space and modern open plan designs.





// RECENT PROJECTS

DOMAIN HOTEL

Domain Hotel Hospitality – Located in the financial District, this 5 Star + Boutique Hotel. Was designed to present the ultimate of wow factor and elegance.

Beautiful, colour schemes, coupled with stylish designs individually tailored to suit the ambient feel of the individual hospitality and restaurant, spaces, spread over six floors of this 37



37 Storey Hotel. From the breath taking views of the 34th, 35th and 36th floors, which hosted a lavish steak restaurant, Japanese restaurant and stylish night club venue on the 36th floor. To the conference suites on the 10th floor and ground floor meet and greet reception area and the 16th floor formal reception.



// RECENT PROJECTS

DOMAIN HOTEL

Six full floor and the ground floor reception, totalling 3,400 m2 of hospitality space fully fitted out from Core and Shell to the very best hospitality and dining experiences Bahrain can offer. This coupled with the main hotel kitchen and live cooking kitchens supporting two of the restaurants and a support bakery in the adjoin building at a cost of 1 million BD with a six month timeline.





// RECENT PROJECTS

JEWEL HOTEL

Jewel Hotel Hospitality Project – Located in the vibrant Adilya area of Bahrain, Geneire was tasked with the Design and Build of several Bar and restaurant Outlets.

The first of these was a 600 m2 Roof Top Restaurant Bar, which adjoined the Pool Area, located on the terrace below. This open space roof was developed by the erection of a steel



portal frame structure, fully glazed ceiling and walls with Panoramic Views of the Bahrain Skyline. The fit out following construction created a 25 meter long bar, VIP spaces, dynamic décor, newly designed lift lobby, new toilets and kitchen to support the bar, restaurant and event space by the pool.



// RECENT PROJECTS

JEWEL HOTEL

The second project was to construct a night club, converting the integral ground floor car parking area, adjoin the reception. The design was challenging in overcoming the impact of the many concrete columns, within the area and blending them in to enhance the dance floor. Consisting of bar area, DJ podium, dance floor raise VIP seating, premier entrance and new bathroom facilities, backed up with lavish décor.

The third project was to change the all-day dining area into a theme restaurant, which featured an entertainment stage, VIP areas and lavish bar.



The entire project had a requirement for soundproofing to ensure no sound travel through the 6 floors of rooms and suites, allowing loud music and singing to do disturb the guests. Totalling 900 m2 these three project were constructed and delivered as a full turnkey Design Build Construction, within 6 months at a cost of BD 850,000.



// RECENT PROJECTS

INTERNATIONAL INSTITUTE OF STRATEGIC STUDIES

IISS GB Corp Tower – Located in the Financial Harbour Complex, in the circular GB Corp Tower. `

The circular layout of this building is a challenge to any design, it ensuring workable spaces that practically support the core business.

The office was largely dedicated to high line Executive offices, Twenty Seated Board Room, which linked through to



an Executive Dining area, which in turn led to a 150 PAX Conference Room.

The Conference Space, was equipped with the very latest Audio Systems, which included a hidden speaker system within the ceiling that gave panoramic crystal clear sound. Translation booth which allowed every member of the audience to listen to the speakers address translated into their own language, in the same way as the UN. Satellite up-link capability to allow broadcast



// RECENT PROJECTS

INTERNATIONAL INSTITUTE OF STRATEGIC STUDIES

throughout the World.

The design was elegant with Maple Framed Glass Office Partitions, which had an etched pattern band for privacy, which followed on in pattern throughout the corridors. A light modern spacious feel with breath taking view of Bahrain Bay. Finished with the very



highest quality Italian Offices Furniture.

The offices covered an area of 1,100 m2, the end to end full turnkey solution of Design, Fit out and Furniture, took 5 months from concept to completion, which overcame the challenges relating to procurement of the extremely high tech audio system and the finish materials such as maple wood for the partitions.



3.2

What We Do

Saudi Arabia



// RECENT PROJECTS

CONTACT CENTRE COMPANY (CCC)

CCC - Riyadh, One of the world's largest call centre companies, serving 11 different Countries had a requirement to merge their Head Office and Satellite Call Centres into one consolidated, specialist International Contact Centre.

In creating this modern work space environment, through a vibrant colour scheme, supported by



space saving bespoke designed flower shaped desks, throughout this 17,500 m2 project. Spread over three floor, with a supporting Data Centre.

The project scope called for full MEP installation, total Interior Fit out Solution and bespoke design furniture manufacture and installation. Added to this highly technical project was an entire requirement for UPS via a Diesel Generator System of three generator, working in tandem over a 24 hour period. This SAR 36,000,000 project was completed in just 10 month from start to finish.



Saudi Arabian Monetary Agency
إدارة النقد السعودي



// RECENT PROJECTS

SAMA HEADQUARTERS AT KAHD

SAMA Headquarters – Located in the futuristic financial city King Abdulla Financial District (KAHD) - Riyadh.

In ensuring that the full expectation of the client were satisfied throughout the end to end process of this 7,500 m² office development. We firstly developed a design that not only captured the Identity of the Saudi Arabian Monetary Agency, but offer a vibrant, crisp, clean environment, but also grasped the modern day egotistic requirements of a modern off today. This married with precise space planning allowed the creation of a truly excellent work space.

The uncompromising modern Interior Design led on to the development of the highest industry standards in MEP design and IT System, to support the Managerial and office staff day in, day out. Comprising of 6 floors of office space open plan, close offices, meeting room, sound proof booths and breakout areas. Complimented with an executive floor with Boardroom, meeting room and executive office, fully supported by cutting edge conference facilities high tech presentation screens and secure access control throughout. Entrance reception, with barrier control and lift lobbies, throughout. Along with a Data centre, with back up UPS and dedicated AC supplies. This 7,500 m² project was delivered end to end in 8 months, the scope comprise of fit out works from core and shell encompassing, Interior finishes, MEP, IT and Furniture supply and installation. Costing SAR 21,000,000



// RECENT PROJECTS

WORLEY PARSONS

Worley Parsons Khobar KSA— In delivering this fast-track project for one of the world's engineering giants, the goal was to balance brand standards, deliver a striking “wow” factor, and implement a cost-effective design that showcased the powerful engineering identity at the core of Worley's business.

The final design featured vibrant colors throughout key office zones, including breakout areas and informal meeting spaces. Drawing inspiration from the geometric precision of the engineering industry, the result was a crisp, sharp, modern, and dynamic office environment spread across 18 floors.

In addition to a bold design and strict budget, the project posed a significant challenge: a tight, seven-month timeline for the full end-to-end delivery—including interior fit-out, furniture supply, and installation—of this 17,000 m² flagship office space.



// RECENT PROJECTS

WORLEY PARSONS

These demands were met with a proactive and driven approach from kickoff through final handover. Rapid development of shop drawings, streamlined procurement, and a dynamic on-site management team enabled high-efficiency execution. Multidisciplinary workforces were expertly coordinated to deliver top-tier productivity and a premium finish.

The result: this SAR 53,000,000 project was completed on time, within budget, and to the full satisfaction of the client.

Project Overview:

17,000 m² new flagship HQ across 18 floors – Turnkey (Design, Fit-out & Furniture)

Project Value: SAR 53,000,000

Location: Khobar, Kingdom of Saudi Arabia





3.3

What We Do

Oman



// RECENT PROJECTS

BANK OF BEIRUT

Bank of Beirut – Muscat Branch, Oman. The rollout program for Bank of Beirut began with the transformation of its

Muscat Branch in Oman.

Shop drawings were developed based on the original design provided by the bank. A bright, crisp color scheme combined with spacious circulation areas created a vibrant, airy environment



for both customers and staff to enjoy.

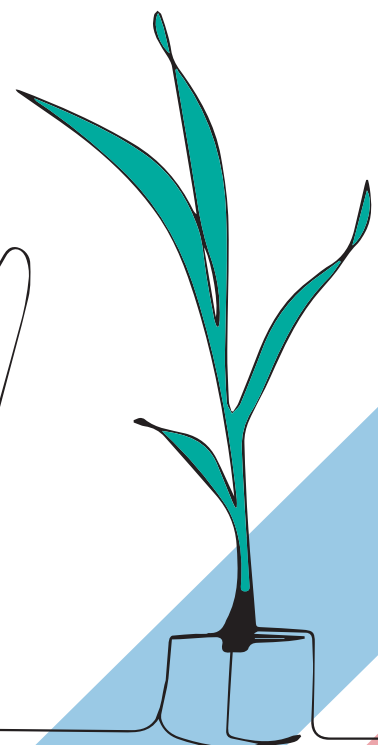
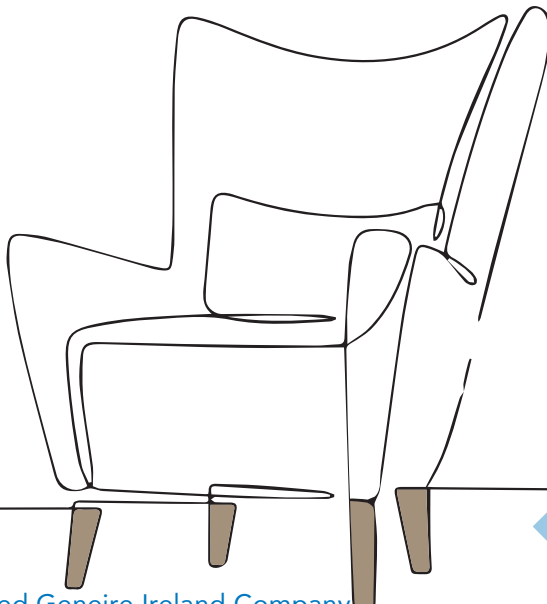
This fast-track, four-month "business-as-usual" project required meticulous planning and was executed in three well-defined phases. To maintain uninterrupted bank operations, a significant portion of the work was completed outside regular business hours, including nightly enabling works that ensured the branch ran smoothly throughout the construction period.



// RECENT PROJECTS

BANK OF BEIRUT

Execution was handled by our elite banking project team, comprising experienced project managers and engineers. Their commitment and precision ensured the successful delivery of this OMR 350,000 project on time and within budget.





// RECENT PROJECTS

ERNST & YOUNG

EY Oman – Design, Fit-Out & Furniture

This turnkey project encompassed the EY Head Office in Oman and a strategic Security Operations Centre (SOC) for the Middle East. The design brief focused on creating a strong brand presence within the workplace, promoting motivation and collaboration throughout the space.



The concept embraced a fully open-plan layout—no closed executive offices—supported by soundproof telephone booths and meeting rooms ranging from huddle spaces to full boardrooms. This ensured that confidential and private discussions could take place without compromising the shared, inclusive environment.



// RECENT PROJECTS

ERNST & YOUNG

The project's cutting-edge nature was elevated by the adjoining SOC, which featured the latest IT infrastructure, interactive screens, and secure-room technology to enable 24/7 operations and fully protected data environments.

This 8,000 m², OMR 1.6 million office project was successfully completed and fully furnished within

a six-month timeline—exceeding both client and consultant expectations.





4. Who They Are



OIL & GAS



ENERGY



CHEMICAL



PHARMACUETICAL & BIO-PHARMACUETICAL



FOOD & BEVERAGE



MINING





DEVELOPMENT

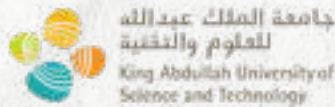


AMAALA

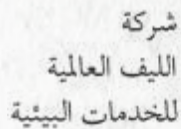


Red Sea
Global

EDUCATION



ENVIRONMENTAL



LEAF
GLOBAL
ENVIRONMENTAL
SERVICES



ENGINEERING



DATA CENTER



BAHREIN DATA SYSTEMS
بحرين داتا سستمز ذ.م.م.



CORPORATE & INSTITUTIONAL BANKING



BNP PARIBAS



بنك بيروت
Bank of Beirut

HOSPITALITY



STRATEGIC CONSULTANCY



INFORMATION TECHNOLOGY ENABLED SERVICES



THANK YOU



info@geneire.com



www.geneire.com



The Address Tower 655, Office 1108, 13th Flr,
Road 3614, Al Seef, Kingdom of Bah